

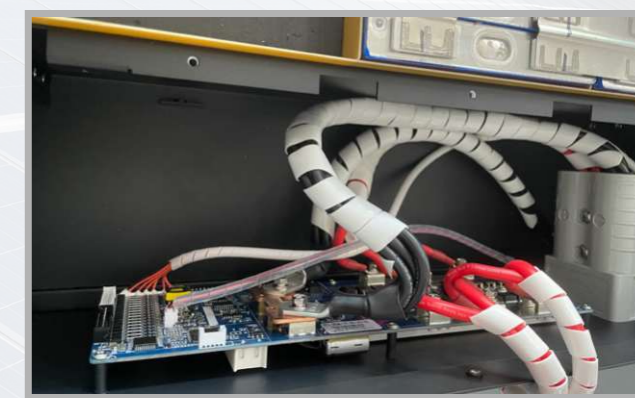
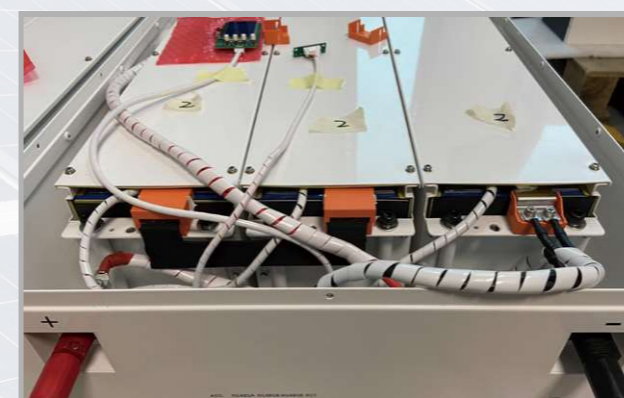


SHENZHEN LITU NEW ENERGY TECHNOLOGY CO.,LTD



PRODUCT SPECIFICATIONS

Battery Specifications			
Model No	YP48100-4.8KWH V1 YP51100-5.12KWH V1	YP48150-7.2KWH V1 YP51150-7.68KWH V1	YP48200-9.6KWH V1 YP51200-10.24KWH V1
Nominal Parameters			
Voltage	48 V/51.2V	48 V/51.2V	48 V/51.2 V
Capacity	100 Ah	150 Ah	200Ah
Energy	4.8 /5.12 Kwh	7.2/7.68 Kwh	9.6 7 10 24 Kwh
Dimensions (L x W x H)	740*530*200mm	740*530*200mm	740*530*200mm
Weight	58.5 / 68 kg	75.0 / 85 kg	96.5/110 kg
Basic Parameters			
Life time(25°C)	10 years		
Life cycles(80% DOD, 25°C)	6000 Cycles		
Storage time f temperature	5 months @ 25°C; 3 months @ 35°C; 1 month ? 45°C		
Operation temperature	=2Q°C to 60°C @60+/-25% Relative Humidity		
Storage temperature	0°C to 450c @60+/-25%. Relative Humidity		
Lithium Battery Standard	UL1642(Cell), IEC62619.UN38.3, MSDS ,CE=EMC		
Enclosure protection rating	IP21		
Electrical Parameters			
Operation voltage	48 Vdc	48 Vdc	48 Vdc
Max. charging voltage	54 Vdc	54 Vdc	54 Vdc
Cut-off Discharge Voltage	42 Vdc	42 Vdc	42 Vdc
Max. charging and discharging current	100A(4800W)	120A(5760W)	120A(5760W)



www.youth-power.net

Email : sales@youth-power.net